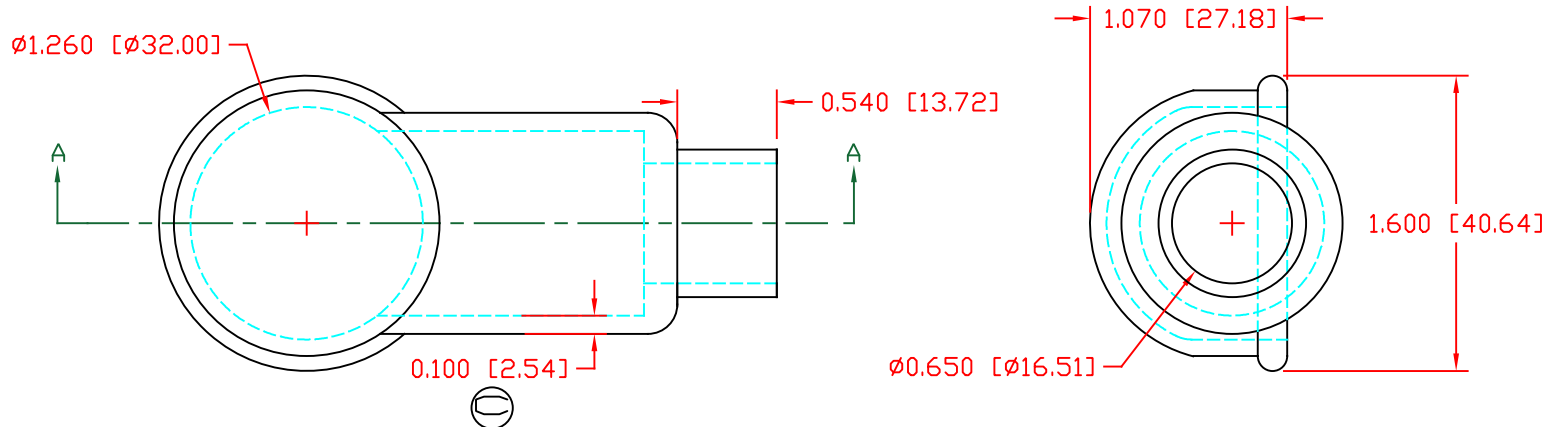


THE INFORMATION CONTAINED IN THIS DRAWING IS THE SOLE PROPERTY OF VTE INCORPORATED. ANY REPRODUCTION IN PART OR WHOLE WITHOUT THE WRITTEN PERMISSION OF VTE INCORPORATED IS PROHIBITED. VTE MAKES NO WARRANTY, EXPRESSED OR IMPLIED, AS TO THE SUITABILITY OF A PRODUCT FOR ANY INTENDED USE. THE CUSTOMER SHALL BEAR THE SOLE RESPONSIBILITY OF DETERMINING THE SUITABILITY OF ANY VTE PRODUCT FOR ITS END USE.


| LTR. | REVISIONS                             | DATE     | INT. |
|------|---------------------------------------|----------|------|
| A    | SEAL WALL THICKNESS REVISED TO 0.075" | 11-04-19 | EJE  |
| B    | UPDATED MATERIAL INFORMATION          | 8-02-22  | RAS  |
| C    | REMOVED 'TYP. WALL THICKNESS' NOTE    | 10-24-22 | RAS  |



SECTION A-A

SCALE FACTOR : NONE  
 ALL DIMENSIONS GIVEN AS: in [mm]  
 TOLERANCES UNLESS OTHERWISE SPECIFIED :  
 MOLDED PARTS:  $\pm 0.030$ " [ $\pm 0.8$ mm]  
 ALL ANGLES ARE  $\pm 1$  DEGREE

|                            |                   |
|----------------------------|-------------------|
| VTE MATERIAL PART NO:      | 1101650114        |
| MATERIAL:                  | BLACK PVC         |
| MATERIAL PART NO:          | 9812-65           |
| MAX OPERATING TEMPERATURE: | 105 C             |
| SHORE DUREMETER:           | "A" 10 SEC. 67/63 |
| SPECIFIC GRAVITY:          | 1.33              |
| ELONGATION %:              | 520               |
| BRITTLENESS TEMPERATURE:   | -36 C             |
| TENSILE STRENGTH, PSI:     | 1563 PSI          |
| U.L. RATING:               | 94 V2             |
| MEETS:                     | FMVSS.302         |

|   |        |   |       |                    |
|---|--------|---|-------|--------------------|
|  |        | <b>VTE Incorporated</b><br>5437 Robinson Road, P.O. Box 790<br>Pellston, Michigan 49769<br>Telephone: 1-800-527-9256, 231-539-8000<br>FAX: 231-539-0914 |       |                    |
|   |        | REF:  | DATE: | DRN BY:            |
|   | 4-3-98 | CHK'D BY:   |       | 058 LBS. / 26.4 G. |
| TITLE: STARTER EYELET TERMINAL INSULATOR  |        |   |       |                    |
| MATERIAL: PVC   |        | PART NO.  |       |                    |
| COLOR: BLACK  |        | DRG CLASS: REV C  |       | 487N8V14           |