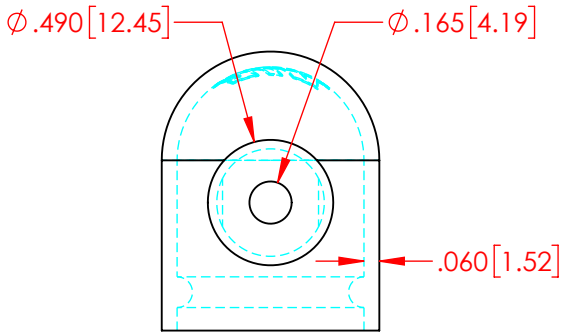
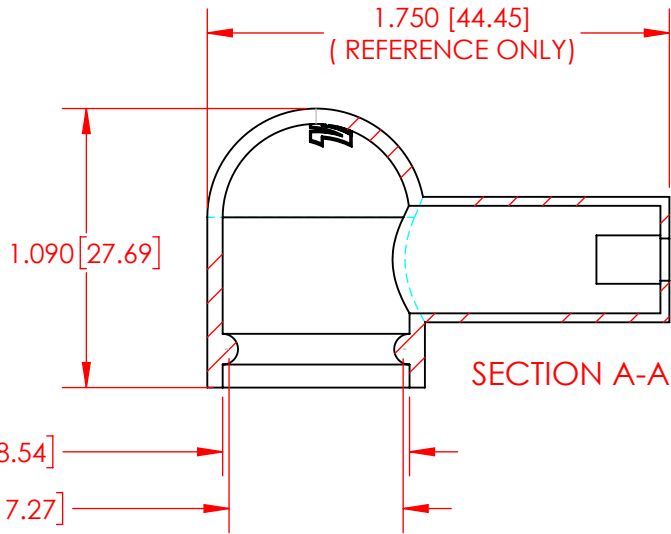
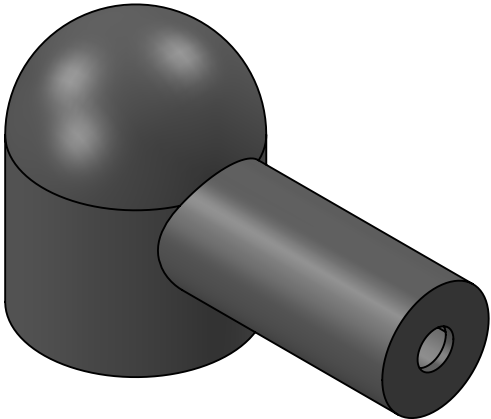
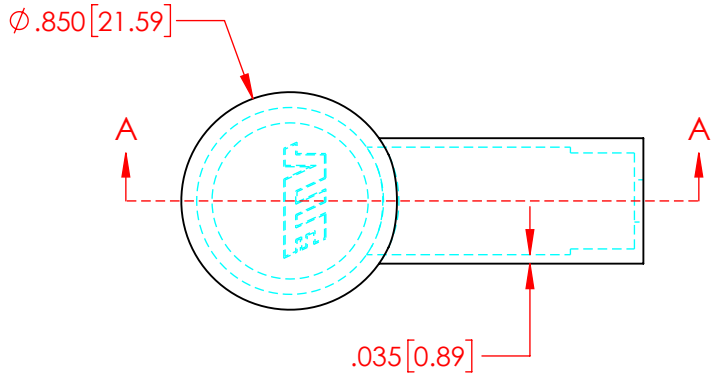


REVISIONS			
REV.	DESCRIPTION	DATE	APPROVED



Material : PVC 9812-65 Black  
 Specific Gravity : 1.34  
 Hardness 10 sec : 65  
 Hardness Scale : A  
 Tensile Strength, Psi : 1550  
 Elongation, % : 400  
 Tear Strength, Ppi : 230  
 Flame Class UL : V2  
 Brittleness Temp., Degrees C : -48  
 Melt Temperature, Degrees F : 315 - 335  
 Dielectric Strength Volts/mil. : 453

Part Weight: 0.010 Lbs. [4.46 g]  
 Part Color : Black

ALL DIMENSIONS GIVEN AS : INCH [METRIC]  
 TOLERANCES UNLESS OTHERWISE SPECIFIED :  
 MOLDED PRODUCTS : ±.030" / ±0.8mm

PRINTED COPIES ARE NOT CONTROLLED

**PROPRIETARY AND CONFIDENTIAL**  
 THE INFORMATION CONTAINED IN THIS  
 DRAWING IS THE SOLE PROPERTY OF  
 VTE INCORPORATED. ANY REPRODUCTION  
 IN PART OR AS A WHOLE WITHOUT THE WRITTEN  
 PERMISSION OF VTE INCORPORATED PROHIBITED.



**VTE INCORPORATED**

5437 Robinson Road, P.O. Box 790  
 Pellston, Michigan 49769 USA  
 Telephone : 1-800-527-9256, 231-539-8000  
 Fax : 231-539-0914, Efax : 231-344-5914

REV	NAME	DATE	TITLE:
	DRAWN BY: RAS	5-22-23	Alternator Boot
SIZE	CHECKED BY: PJK	5-22-23	DWG. NO.
<b>A</b>	DO NOT SCALE DRAWING		<b>800N3V14</b>