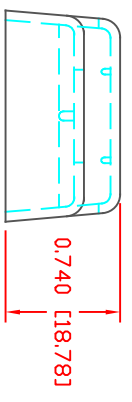
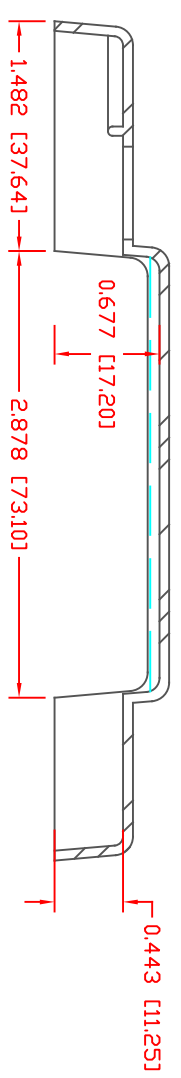
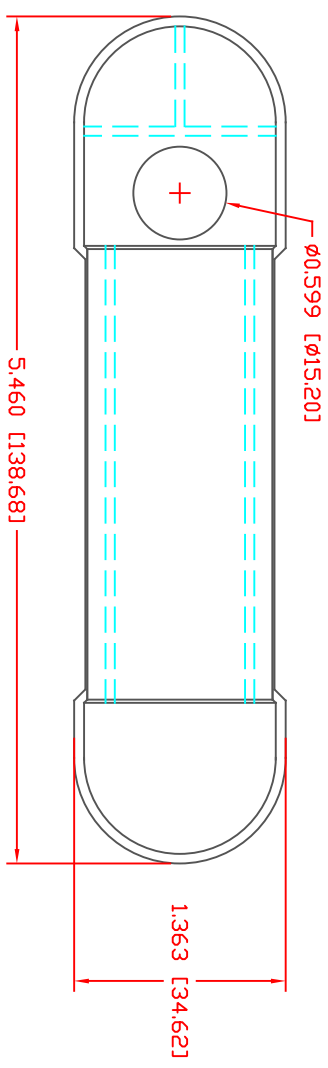


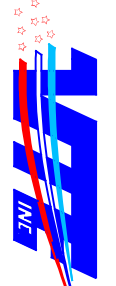
THE INFORMATION CONTAINED IN THIS DRAWING IS THE SOLE PROPERTY OF VTE INCORPORATED. ANY REPRODUCTION IN PART OR WHOLE WITHOUT THE WRITTEN PERMISSION OF VTE INCORPORATED IS PROHIBITED. VTE MAKES NO WARRANTY, EXPRESSED OR IMPLIED, AS TO THE SUITABILITY OF A PRODUCT FOR ANY INTENDED USE. THE CUSTOMER SHALL BEAR THE SOLE RESPONSIBILITY OF DETERMINING THE SUITABILITY OF ANY VTE PRODUCT FOR ITS END USE.

LTR	REVISIONS	DATE	INT.
△	UPDATED MATERIAL INFORMATION FOR POLYPROPYLENE	8-15-22	RAS



MATERIAL PART NO: 1209720314  
 MATERIAL: POLYPROPYLENE  
 VENDOR PART NO: MAFILL CR HT 6644 H  
 ASH FILLER CONTENT: 40%  
 TENSILE STRENGTH, YIELD: 33 MPa  
 DENSITY (G/CM<sup>3</sup>): 1.25  
 NOTCHED CHARPY IMPACT, 23C: 2.5 KJ/M<sup>2</sup>  
 MFI (230DEG C/2.1kg): 13 g/10 min  
 FLAME CLASS UL: HB

SCALE FACTOR : NONE  
 ALL DIMENSIONS GIVEN AS: In [mm]  
 TOLERANCES UNLESS OTHERWISE SPECIFIED :  
 MOLDED PARTS: ±.030" [±0.8mm]  
 ALL ANGLES ARE ± 1 DEGREE



**VTE Incorporated**  
 5437 Robinson Road, P.O. Box 790  
 Pellston, Michigan 49769  
 Telephone: 1-800-527-9256, 231-539-8000  
 FAX: 231-539-0914

REF:	DATE:	DRN BY:	BRH	WEIGHT:
CUSTOMER DIMS	10-01-08	CHK'D BY:	BRH	.029 LBS [13.2 g]
TITLE: COVER, 12 POINT BUS				
MATERIAL:	POLYPROPYLENE	PART NO. 312N9P14		
COLOR:	BLACK	DRG CLASS	REV A	

DD NOT SCALE