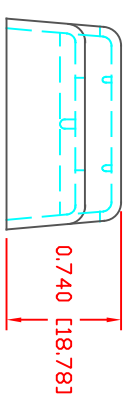
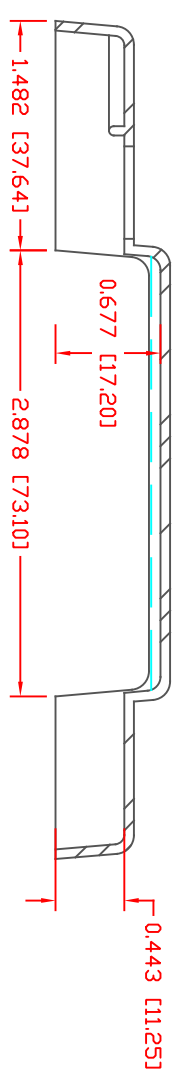
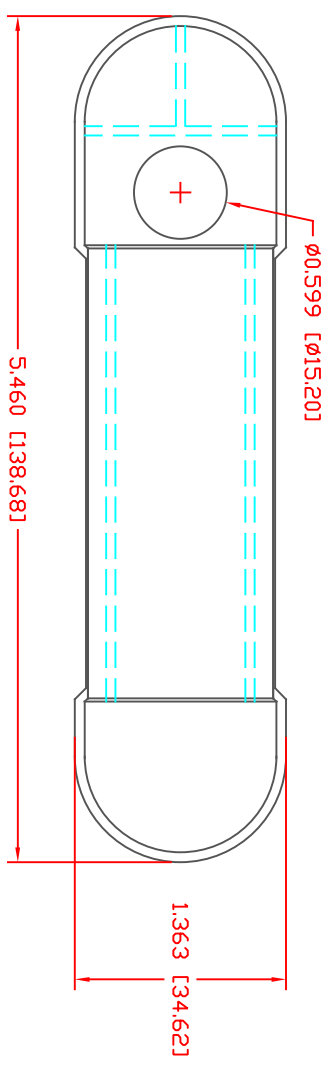


THE INFORMATION CONTAINED IN THIS DRAWING IS THE SOLE PROPERTY OF VTE INCORPORATED. ANY REPRODUCTION IN PART OR WHOLE WITHOUT THE WRITTEN PERMISSION OF VTE INCORPORATED IS PROHIBITED. VTE MAKES NO WARRANTY, EXPRESSED OR IMPLIED, AS TO THE SUITABILITY OF A PRODUCT FOR ANY INTENDED USE. THE CUSTOMER SHALL BEAR THE SOLE RESPONSIBILITY OF DETERMINING THE SUITABILITY OF ANY VTE PRODUCT FOR ITS END USE.

LTR	REVISIONS	DATE	INT.
△	UPDATED MATERIAL INFORMATION FOR POLYPROPYLENE	8-15-22	RAS



MATERIAL PART NO: 1209650315
 MATERIAL: POLYPROPYLENE
 VENDOR PART NO: MAFILL CR HT 5641
 ASH FILLER CONTENT: 38%
 TENSILE STRENGTH, YIELD: 33 MPa
 DENSITY (G/CM³): 1.25
 NOTCHED IZOD IMPACT: 0.6 ft-lb/in
 MFI (230DEG C /2.1KG): 13 g/10 min
 FLAME CLASS UL: HB

SCALE FACTOR : NONE
 ALL DIMENSIONS GIVEN AS: In [mm]
 TOLERANCES UNLESS OTHERWISE SPECIFIED :
 MOLDED PARTS: ±.030" [±0.8mm]
 ALL ANGLES ARE ± 1 DEGREE



VTE Incorporated
 5437 Robinson Road, P.O. Box 790
 Pellston, Michigan 49769
 Telephone: 1-800-527-9256, 231-539-8000
 FAX: 231-539-0914

REF	DATE	DRN BY:	BRH	WEIGHT:
CUSTOMER DIMS	10-01-08	CHK'D BY:	BRH	.029 LBS [13.2 g]
TITLE: COVER, 12 POINT BUS				
MATERIAL:	POLYPROPYLENE	PART NO:	312N9P02	
COLOR:	RED	DRG CLASS	REV A	

DO NOT SCALE